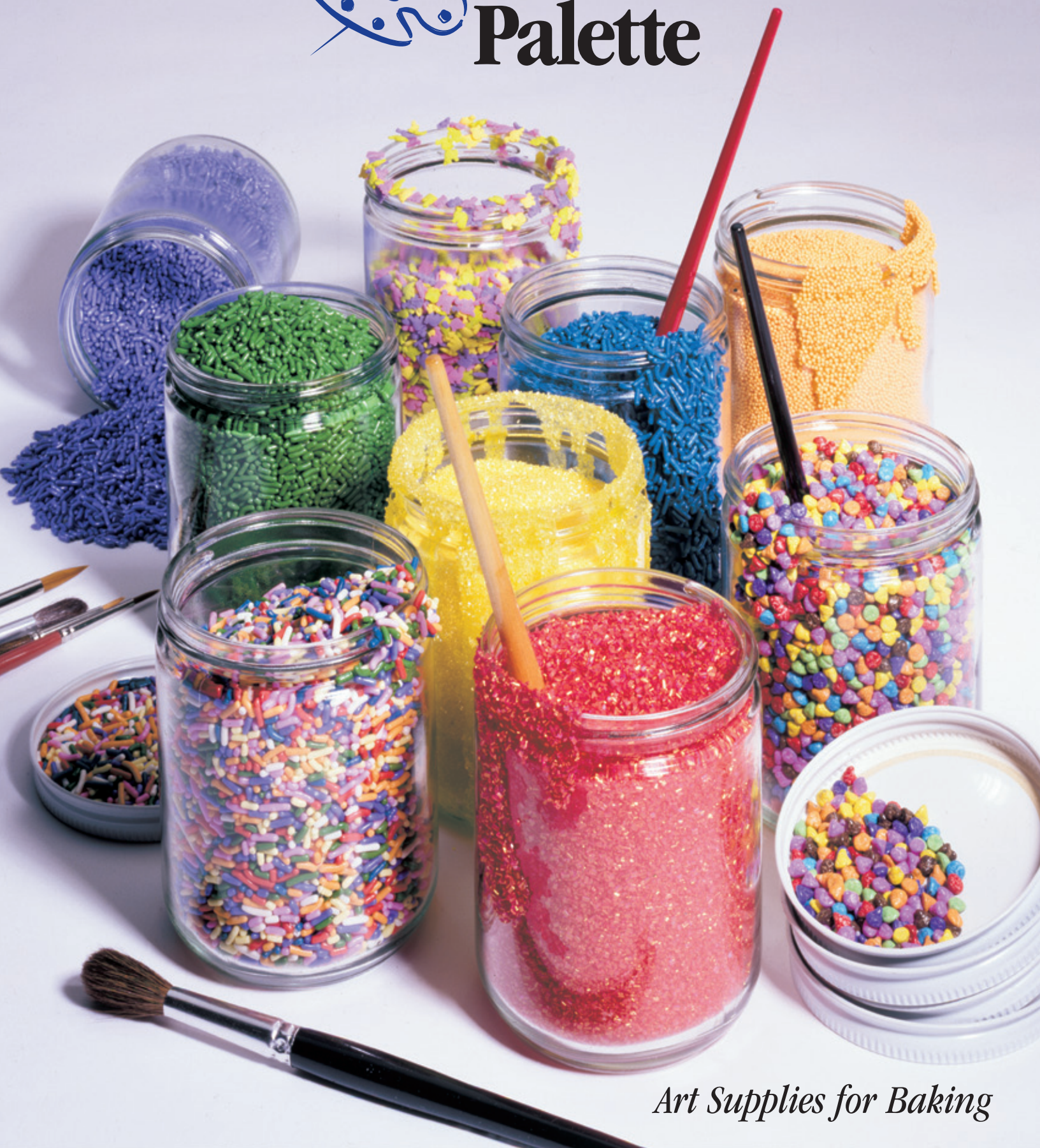




Baker's Palette

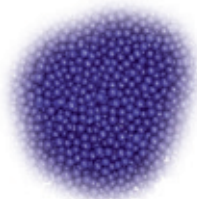


Art Supplies for Baking

Create More Sales With Baker's Palette



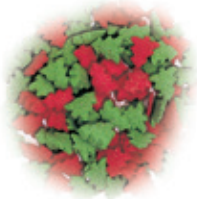
Decorating with **Baker's Palette** toppings and inclusions creates the eye appeal that ensures your baked goods always look as good as they taste. Using **Baker's Palette** toppings and inclusions is easy to do, will increase your margins and drive higher volume.



Baker's Palette offers a complete line of high quality, competitively priced toppings and inclusions. Our line includes sprinkles, nonpareils, colored sugars, candy-coated chocolate, confectionery shapes and shape mixes in a variety of colors, combinations and seasonal variations. We are also developing additional new and innovative products that promise to add excitement to the industry and boost your profitability. And, as always, we are happy to work with you to develop custom formulations and blends.



Baker's Palette is actually an old friend with a new name. A product of **Paulaur Corporation**, an innovative maker of specialty ingredients serving the industrial food and wholesale baking industries for over 30 years, the **Baker's Palette** brand is now available to bakery distributors.



We have designed new packaging options and shipping programs to suit retail bakers' special requirements. Our new 6 pound resealable poly bag in carton, for example, allows smaller bakers to order more manageable quantities of **Baker's Palette** products through their distributors. Larger volume and wholesale bakery operators can take advantage of our medium- and large-size bulk packaging options.



Recent studies show that decorating baked goods with sprinkles and toppings can actually increase sales. Consumers seem to prefer cookies, cakes and donuts enhanced with these toppings. **Baker's Palette** products are the simple and economical way to turn standard baked goods into the kind of seasonal and signature items that are a proven hit with customers.

At **Baker's Palette** customers constantly tell us they enjoy working with us. We believe we earn their loyalty through our responsiveness to customers' needs and to our dedication to making sure product orders are complete, accurate and delivered on time. Our strong customer focus assures that their satisfaction is always our priority.

Learn more about how **Baker's Palette** can work for you.

Contact Kathy LaPrey, toll free, at 1-888-398-8844.



Sprinkles



White



Pink



Red

- Solid-colored, soft extruded rods in chocolate flavor and a variety of vibrant colors with a sweet, clean taste
- Available in a complete palette of standard colors and festive blends
- Will work to develop custom colors, blends and formulations
- Used as a decorative topping to add eye appeal, texture and taste to baked goods, ice cream and confectionery products
- Size approximately 4mm to 8mm in length and 2mm in diameter
- Packaging options include 4x6# carton with resealable poly bag, 25#, 50#, and 125# cases



Orange



Yellow



Green

Seasonal Items

- St. Valentine's Mix
- St. Patrick's Mix
- Spring Mix
- Patriot's Mix
- Halloween Mix
- Harvest Mix
- Christmas Mix
- Jingle Mix



Blue



Purple



Chocolate



Rainbow
w/Chocolate Mix



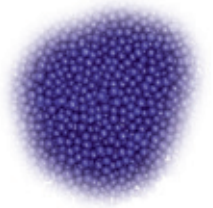
Rainbow #6 Mix



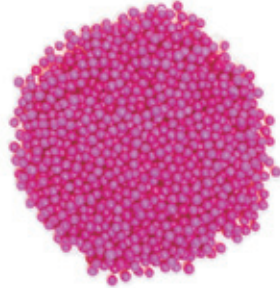
Rainbow #8 Mix



Nonpareils



White



Pink

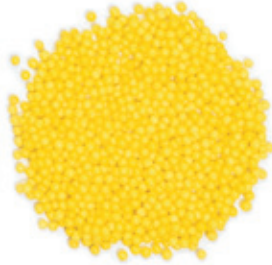


Red

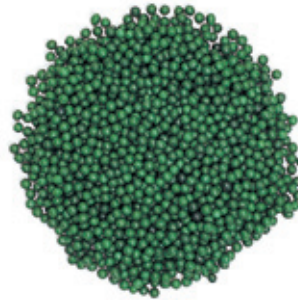
- Hard, round edible spheres with a sweet, clean taste
- Available in a complete palette of standard colors and several festive blends
- Will work to develop custom colors, blends and formulations
- Used as a decorative topping to add eye appeal, texture and taste to cookies, cakes and confectionery products
- Product shown is actual size
- Packaging options include 4x6# carton with resealable poly bag, 30#, 50#, and 125# cases



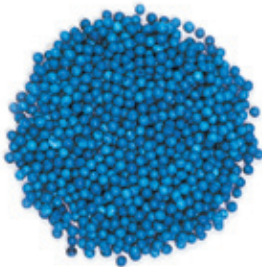
Orange



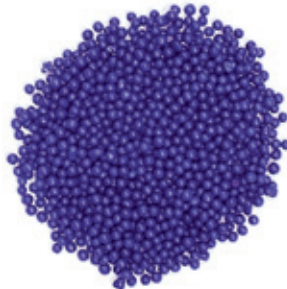
Yellow



Green



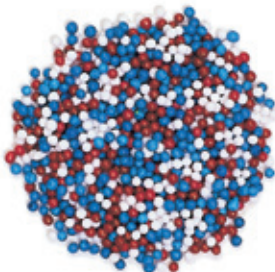
Blue



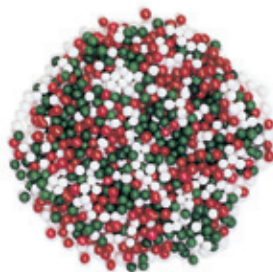
Purple



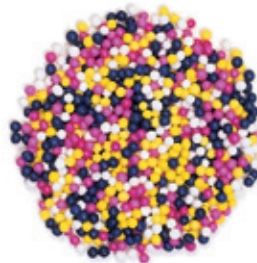
Rainbow #8 Mix



Patriot's Mix



Christmas Mix



Spring Mix

Also available in
Jingle Mix
(Red & Green only)



Colored Sugars



White



Pink



Red



Orange



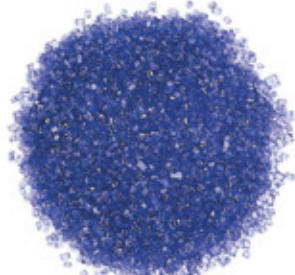
Yellow



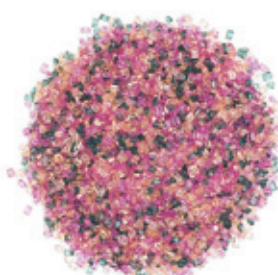
Green



Blue



Purple



Rainbow



White (Coarse)



Red (Coarse)



Green (Coarse)

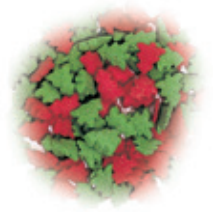


Christmas Mix (Coarse)

- 100% pure cane sugar crystals colored and polished in an array of vibrant colors
- Available in a complete palette of colors and several festive blends
- Used as decorative topping to add sparkle to cookies, donuts and other baked goods
- Will work to develop custom colors, blends and formulations
- All colors offered in two granule sizes, standard and sanding (shown actual size)
- Packaging options include 4x6# carton with resealable poly bag, 30#, 50#, and 125# cases



Confectionery Shapes & Shape Mixes



Confetti (Large)



Flowers



Dinosaurs

- Hard, edible extruded confectionery pieces formed in an array of recognizable, popular figures
- Available in a wide range of novel shapes and colors
- Used to add a festive touch to baked goods and ice cream
- Product sizes vary but shown in actual size
- Packaging options include 4x6# carton with resealable poly bag and 25# cases



Hearts



Pumpkins & Bats



Christmas Trees

Additional Confectionery Shape Items

- Confetti (Small)
- Bears
- Chicks & Ducks
- Stars
- Eggs
- Shamrocks
- Fall Leaves
- Pumpkins
- Butterflies
- Snowflakes



Pig Pen Mix



Pumpkin Patch Mix



Bear Mix

Additional Confectionery Shape Mixes

- Dinosaur Mix
- Chicks & Ducks Mix
- Heart Mix
- Tree Mix
- Stars & Stripes Mix
- Shamrock Mix
- Pumpkin Mix

Candy-Coated Chocolate



Small Chips



Lentils

Candy-Coated Chocolate

- Compound chocolate centers (chips and lentils) with hard candy-coated outer shell
- Available in a variety of vibrant colors
- Will work to develop custom colors, blends and formulations
- Used as both an inclusion and topping for baked goods and ice cream
- Product shown is actual size
- Packaging options include 4x6# carton with resealable poly bag and 30# cases



Paulaur Corporation

105 Melrich Road
Cranbury, NJ 08512

1-888-398-8844

Fax: 609-395-8850

www.paulaur.com

